

USB PTZ Camera Controller

User Manual

Version : 1.0.19 Issue Date : AUG 17, 2022



Copyright Information

Copyrights © Lumens Digital Optics Inc., All rights reserved.

Lumens is a registered trademark of Lumens Digital Optics Inc.

Copying, reproducing or transmitting this file is not allowed if a license is not provided by Lumens Digital Optics Inc. unless copying this file is for the purpose of backup after purchasing this product.

In order to keep improving the product, Lumens Digital Optics Inc. hereby reserves the right to make changes to product specifications without prior notice. The information in this file is subject to change without prior notice.

To fully explain or describe how this product should be used, this manual may refer to names of other products or companies without any intention of infringement.

Disclaimer of warranties: Lumens Digital Optics Inc. is neither responsible for any possible technological, editorial errors or omissions, nor responsible for any incidental or related damages arising from providing this file, using, or operating this product.

Table of Contents

1 What is USB PTZ Camera Controller	3
1.1 Introduction to USB PTZ Camera Controller	3
1.2 Applicable to	3
2 Connections and Installation.....	3
2.1 System Requirements.....	3
2.2 Installing USB PTZ Camera Controller on Windows	3
2.3 Installing USB PTZS Camera Controller on a MAC	4
3 Start Using.....	6
4 Function Description.....	7
4.1 PTZ main Screen	7
4.2 Picture Settings Page	8
4.3 Advanced Settings	9
5 I would like to perform.....	14
5.1 I would like to adjust the shooting angle of the lens	14
5.2 I would like to zoom in/out images	14
5.3 I would like to save / call a lens preset.....	14
5.4 I would like to adjust the focal length	14
6 Troubleshooting.....	15

1 What is USB PTZ Camera Controller

1.1 Introduction to USB PTZ Camera Controller

The software enables users to control the PTZ camera and modify its settings, providing convenient camera control during a video conference.

1.2 Applicable to: Please visit Lumens official website and refer to [Lumens Software Compatible List](#)

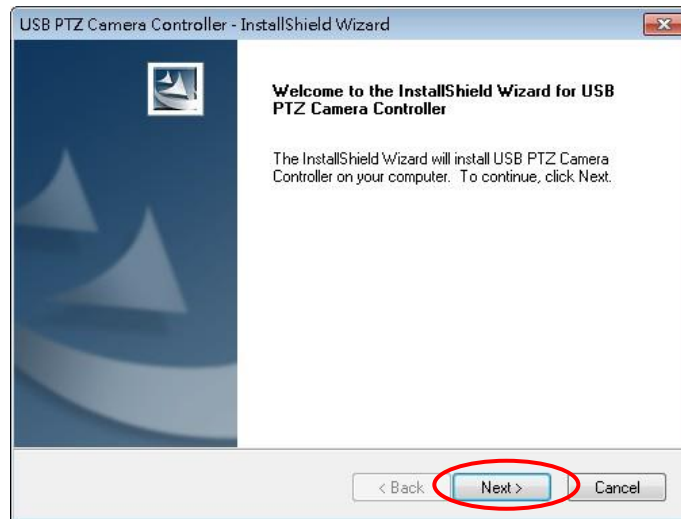
2 Connections and Installation

2.1 System Requirements

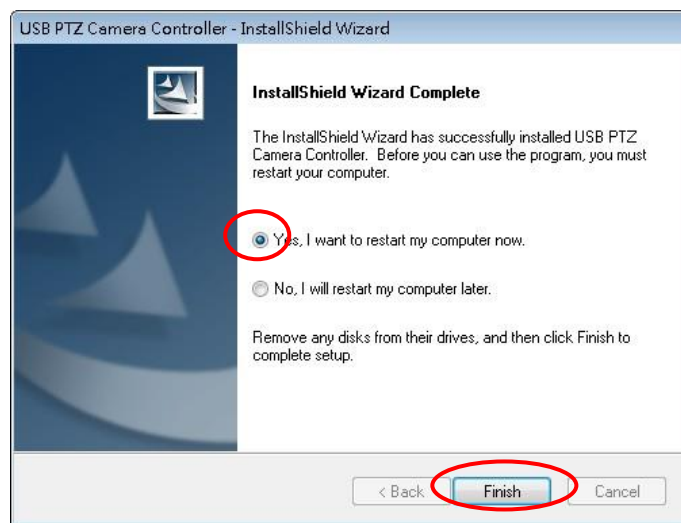
- ◆ OS: Windows 7 / 8 / 8.1 / 10
 - CPU: Intel Core 2 Duo 2 GHz or above
 - Memory: 1 GB (32-bits)/2 GB (64-bits) RAM
 - Min Hard Drive Space: 1 GB or above
 - Min Resolution: 1024 x 768
 - Supporting Direct X 9
- ◆ OS: MAC OS X 10.8 ~ 10.12
 - CPU: CPU: Intel Pentium® 2 GHz Intel Core 2 Duo
 - Memory: 1 GB DDR2 667 Hz RAM or above
 - Min Hard Drive Space: 1 GB or above
 - Min Resolution: 1024 x 768
 - 24-bit display
 - QuickTime: 7.4.5 or above

2.2 Installing USB PTZ Camera Controller on Windows

- 2.2.1 Click **[setup.exe]** to enter the installation screen, then follow the instruction on the screen to click [Next].

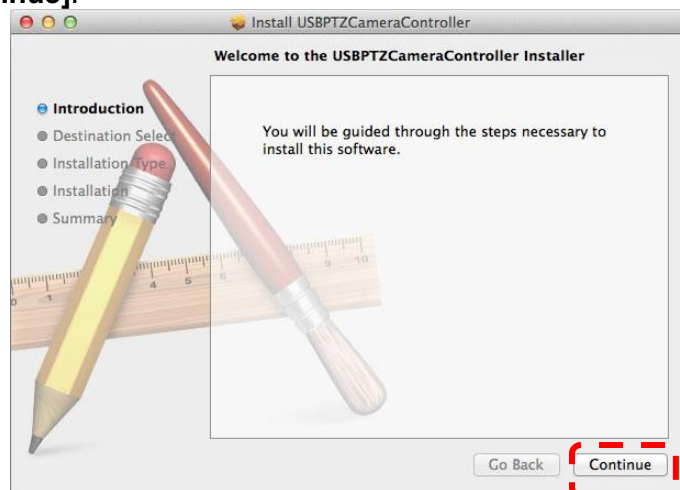


2.2.2 Please **[Restart]** the computer to complete the installation.

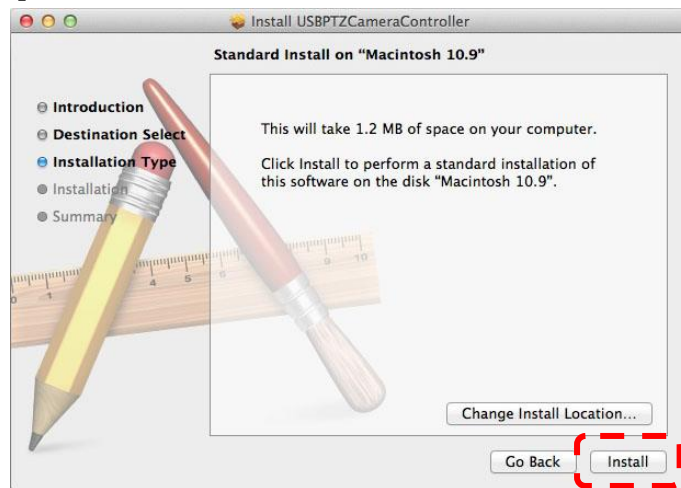


2.3 Installing USB PTZS Camera Controller on a MAC

- 2.3.1 Please download **USB PTZ Camera Controller** software on the **Lumens™** website.
- 2.3.2 Extract the file downloaded and then click **[USBPTZCameraController.pkg]** to install.
- 2.3.3 Please finish the installation by following the on-screen instructions.
- 2.3.4 Click **[Continue]**.



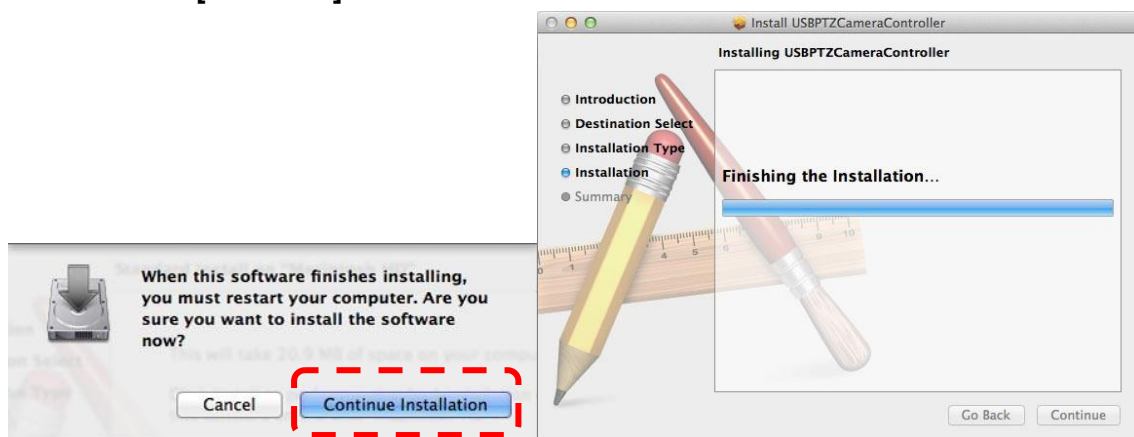
2.3.5 Click [Install].



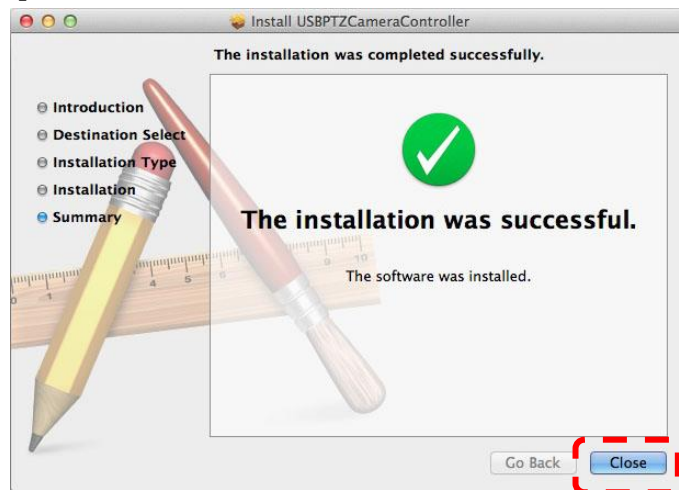
2.3.6 Enter the username and password, and then press [Install Software].



2.3.7 Click [Continue].



2.3.8 Press **[Restart]** to finish the software installation.



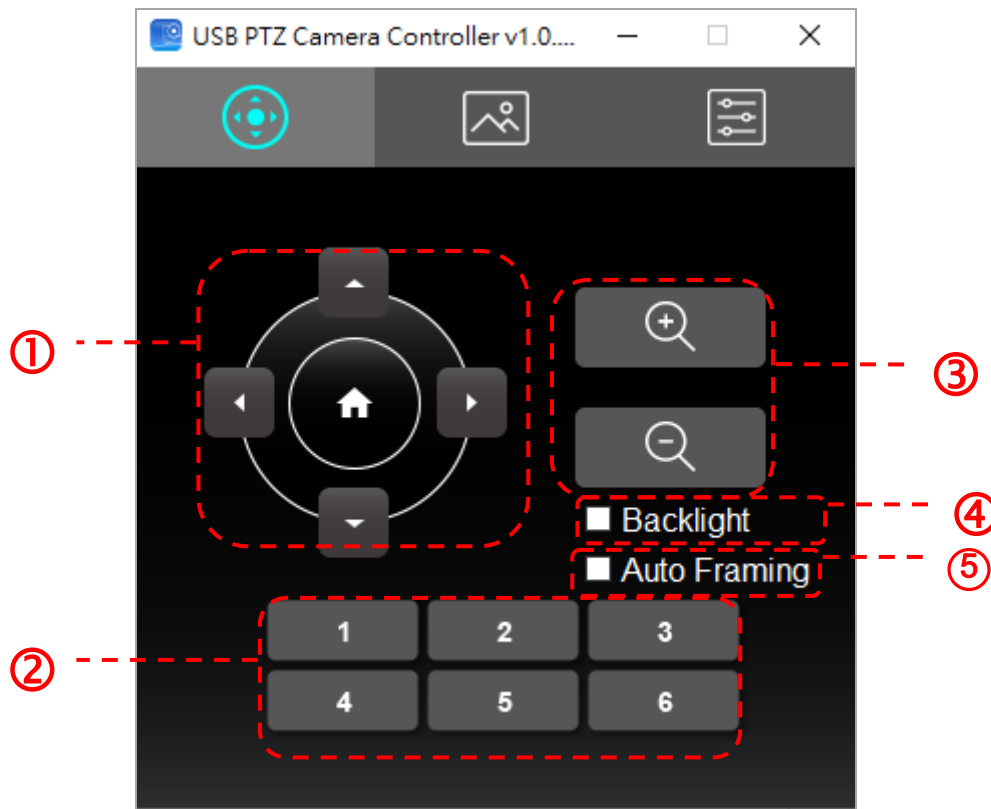
3 Start Using

Before launching the software, please ensure that the camera is correctly installed. Only launch **USB PTZ Camera Controller** after the video conference begins.

4 Function Description

4.1 PTZ main Screen

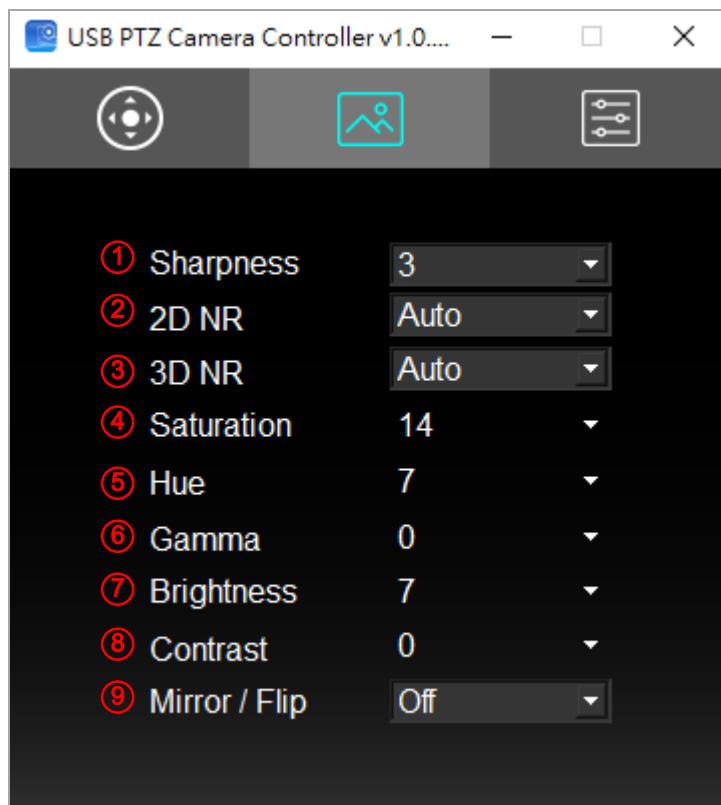
This screen offers a set of commonly used camera functions.



No.	Function	Description
1.	◀, ▶, ▲, ▼	Move the lens
2.	Call Preset (1~6)	Pre-set Shortcuts
3.	Zoom +/-	Adjust image size <Description> 4K resolution does not support Zoom function
4.	Backlight	Backlight compensation <Description> Not applicable to: VC-B10U
5.	Auto Framing	Smart viewfinder <Description> Not applicable to: VC-B11U, MS-10

4.2 Picture Settings Page

Image quality related parameters can be modified on this page



No.	Function	Description
1.	Sharpness	Adjust the Sharpness of the image
2.	2D NR	2D noise reduction setting
3.	3D NR*	3D dynamic noise reduction settings
4.	Saturation**	Adjust the Saturation of the image
5.	Hue**	Adjust the Hue of the image
6.	Gamma**	Adjust the Gamma of the image
7.	Brightness**	Adjust the Brightness of the image
8.	Contrast***	Adjust the Contrast value of the image
9.	Mirror / Flip*	Set the Mirror/Flip mode
<Description>		
* Not applicable to: MS-10		
** Not applicable to: VC-A71P/ VC-A71P-HN/ VC-BC301P		
*** Not applicable to: VC-A71P/ VC-A71P-HN/ VCBC301P/ VC-R30/ VC-TR40		

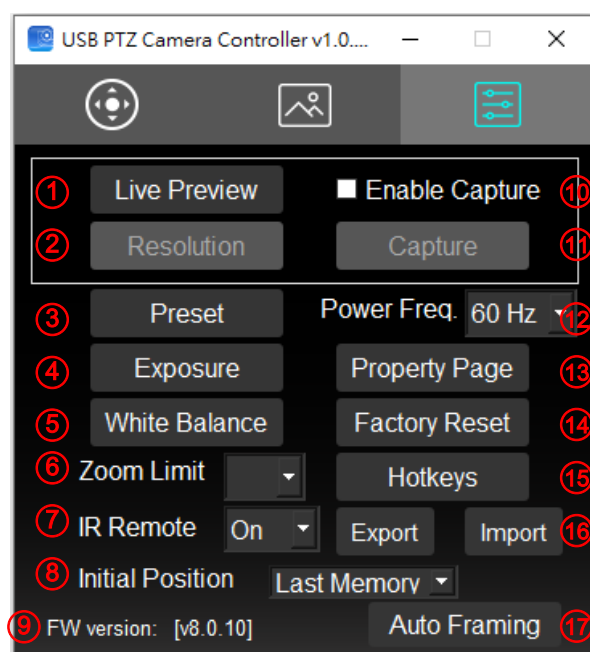
4.3 Advanced Settings

Users can access advanced camera functions and modify advanced settings on this page.

4.3.1 Function Supporting List

	MS-10	VC-A71P	VC-A71P-H N	VC-B10U	VC-B11U	VC-B20U	VC-B30U	VC-BC301P	VC-R30	VC-TR40
Live Preview	V	V	V	V	V	V	V	V	V	V
Resolution	V	V	V	V	V	V	V	V	V	V
Enable Capture	V	X	X	V	V	V	V	X	V	V
Capture	V	V	V	V	V	V	V	V	V	V
Preset	V	V	V	V	V	V	V	V	V	V
Exposure	V	V	V	V	V	V	V	V	V	V
White Balance	V	V	V	V	V	V	V	V	V	V
Auto Focus	X	V	V	X	X	V	V	X	V	V
Auto Framing	V	X	X	X	V	X	X	X	X	X
Zoom Limit	X	X	X	V	V	X	X	X	X	X
IR Remote	X	X	X	V	V	X	X	X	X	X
Power Freq.	V	V	V	V	V	V	V	V	V	V
Factory Reset	V	V	V	V	V	V	V	V	V	V
Property Page	V	V	V	V	V	V	V	V	V	V
HotKeys	V	V	V	V	V	V	V	V	V	V
Export	V	V	V	V	V	V	V	V	V	V
Import	V	V	V	V	V	V	V	V	V	V
Initial Position	V	X	X	V	V	X	X	X	X	X
Privacy Mode	X	X	X	X	X	X	V	X	V	V
FW version	V	V	V	V	V	V	V	V	V	V

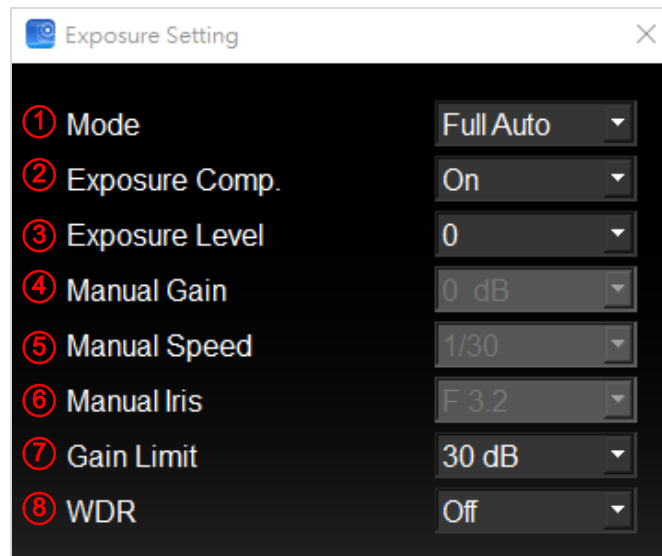
4.3.2 Advanced Settings



No.	Function	Description
1.	Live Preview	Opens the USB PTZ Camera preview window
2.	Resolution	Settings of the preview window resolution; this function will only be available when the preview window is launched
3.	Preset	Opens the preset settings window
4.	Exposure	Opens the exposure settings window, please refer to 4.3.3 Exposure Settings
5.	White Balance	Opens the white balance settings window, please refer to 4.3.4 White Balance Settings
6.	Zoom Limit	Magnification Limit
7.	IR Remote	Turn on/off the infrared reception When it is Off, the remote control will not be able to control the camera.
8.	Initial Position	Select the camera lens to return to wide angle, the last operated position or the first preset position after POWER ON
9.	FW version	Displays the FW version number
10.	Enable Capture	Deactivate capture function
11.	Capture	Capture images <Remark> Turn on the capture function to capture the images
12.	Power Freq.	Set up the power frequency 50/60 hz
13.	Property Page	Opens the Windows built-in video property page
14.	Factory Reset	Returns to factory reset
15.	Hotkeys	Sets hotkeys
16.	Export / Import	The page setting parameters can be exported from the computer and imported/applied to another camera
17.	Auto Framing	Sets Smart Viewfinder, please refer to 4.3.5 Smart Viewfinder Settings

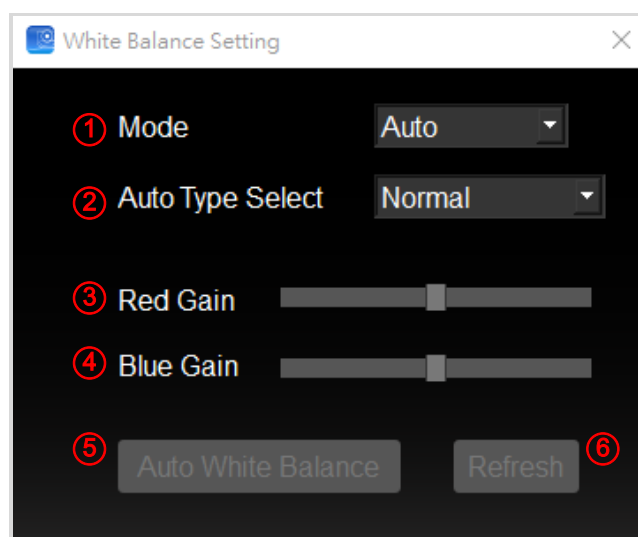
18.	Auto Focus	Opens the auto focus settings window, please refer to 4.3.6 Auto Focus Settings
19.	Privacy Mode	Enable/Disable Privacy Mode

4.3.3 Exposure Settings



No.	Function	Description
1.	Mode	Exposure mode setting
2.	Exposure Comp. *	Turn on/off Exposure Comp.
3.	Exposure Level	Adjusts exposure level, adjustable after Exposure Comp. is activated
4.	Manual Gain	The value can be adjusted when the mode is set to Manual
5.	Manual Speed	The value can be adjusted when the mode is set to Shutter Pri
6.	Manual Iris**	The value can be adjusted when the mode is set to Manual or IRIS Pri
7.	Gain Limit**	Different AE Modes store Gain Limit parameters respectively
8.	WDR	WDR settings
<Remark> * Not applicable to: MS-10/VC-B11U/VC-B20U ** Not applicable to: MS-10/VC-B11U		

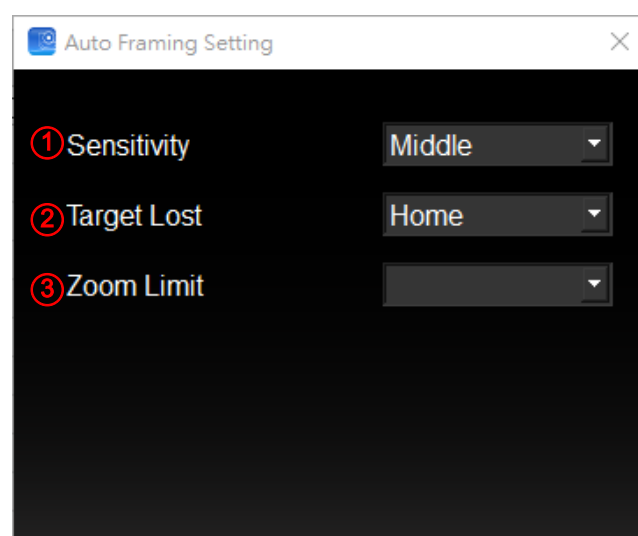
4.3.4 White Balance Settings



No.	Function	Description
1.	Mode	Sets white balance mode
2.	Auto Type Select	Selects different modes under Auto <Remark> Not applicable to: VC-B10U
3.	Red Gain	The value can be adjusted when the mode is set to Manual
4.	Blue Gain	The value can be adjusted when the mode is set to Manual
5.	Auto White Balance	Performs auto white balance once <Remark> Available when the mode is set to Manual
6.	Refresh	Refreshes Red Gain and Blue Gain location status <Remark> Available when the mode is set to Manual

4.3.5 Smart viewfinder setting

Applicable to: MS-10/VC-B11U

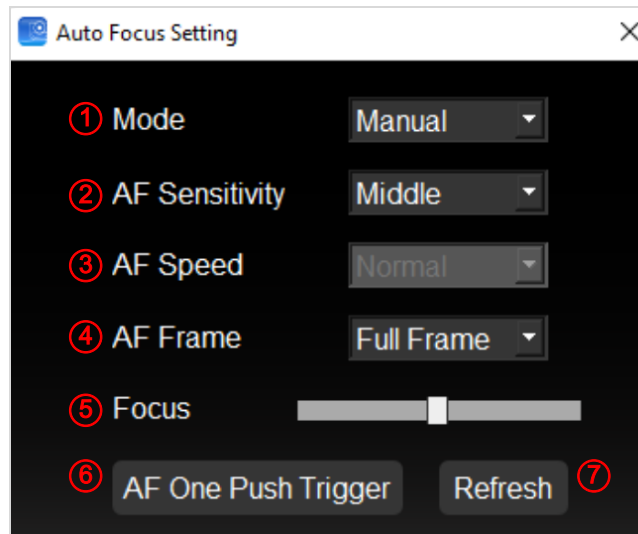


No.	Function	Description
1.	Sensitivity	Set auto framing sensitivity
2.	Target Lost	Set the behavior when no tracking object is in the screen

3.	Zoom Limit	Limit the max value of Zoom <Remark> Applicable to: VC-B11U
----	------------	--

4.3.6 Auto focus


Applicable to: VC-A71P/ VC-A71P-HN/ VC-B30U/ VC-R30/ VC-TR40




No.	Function	Description
4.	Mode	Sets focus mode
5.	AF Sensitivity	Selects AF triggering speed <Remark> Applicable to: VC-A71P/ VC-A71P-HN/ VC-B30U
6.	AF Speed	Focus speed after AF triggering <Remark> Applicable to: VC-B30U
7.	AF Frame	Selects Full or Center focus
8.	Focus	Adjust focal length <Remark> The value can be adjusted when the mode is set to Manual
9.	AF One Push Trigger	Performs focus once
10.	Refresh	Refreshes Focus location status

5 I would like to perform...

5.1 I would like to adjust the shooting angle of the lens


1. Switch to PTZ  page
2. Click on [◀, ▶, ▲, ▼] to adjust the lens until the image is at the desired angle

5.2 I would like to zoom in/out images


1. Switch to PTZ  page
2. Press [+] to zoom in the image
3. Press [-] to zoom out the image

5.3 I would like to save / call a lens preset


5.3.1 Perform rapid switches between presets

1. Switch to PTZ  page
2. Click on [1] to [6] to change the angle of the lens


5.3.2 Switching between presents

1. Switch to Advanced Settings  page
2. Press [Preset] to open the Preset Settings window
3. Select a preset number [0 ~ 127]
4. Click [Call Preset] to switch presets

5.3.3 Save preset

1. Switch to Advanced Settings  page
2. Press [Preset] to open the Preset Settings window
3. Press [◀, ▶, ▲, ▼] to adjust the lens
4. Press [+/-] to adjust the image
5. Select a preset number [0 ~ 127]
6. Press [Set Preset] to save a preset

5.4 I would like to adjust the focal length

1. Switch to Advanced Settings  page
2. Click [Auto Focus] to open the auto focus settings window
3. Select [Manual]
4. Adjust [Focus]
5. Click [x] on the top right corner of the window once the parameters are set

6 Troubleshooting

This chapter describes problems you may encounter while using USB PTZ Camera Controller. If you have questions, please refer to related chapters and follow all the suggested solutions. If the problem still occurred, please contact your distributor or the service center.

No.	Problems	Solutions
1.	My subject's face is underexposed because of a strong backlight.	Activate BackLight
2.	I have launched the USB PTZ Camera Controller but I cannot control the camera.	<ol style="list-style-type: none">1. Please ensure that the VC-B20U is connected to a power source.2. Ensure that the USB is connected.3. If the problem persists, please contact our distributors or service center.
3.	I am unable to Pan / Tilt the camera.	Please ensure that the preview screen is open.